

# WSMTF

## WATER SERVICES MAINTENANCE TRUST FUND

### Why

Rural water infrastructure fails regularly and leaves communities, schools and healthcare facilities without safe water for weeks and often months (fig.1). This is a significant hardship for women, children and their families (fig. 2)

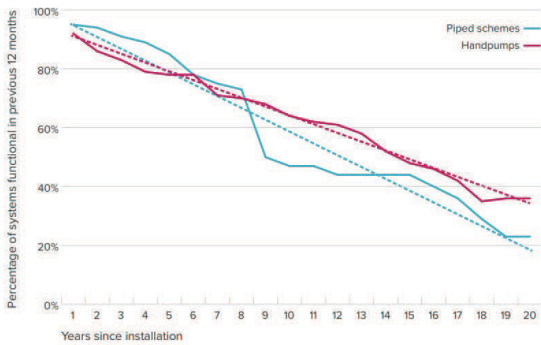


Fig 1: Survival curve for handpumps and piped schemes in Kitui county, Kenya. Source: Foster 2019



Fig.2: Long queues for drinking water in Mwingi North

### What

Financial support to professional O&M service providers to guarantee repair failure events in a few days. Professional service delivery is much faster and reliable than community management which can take several weeks or months.

#### Mean repair time (days)

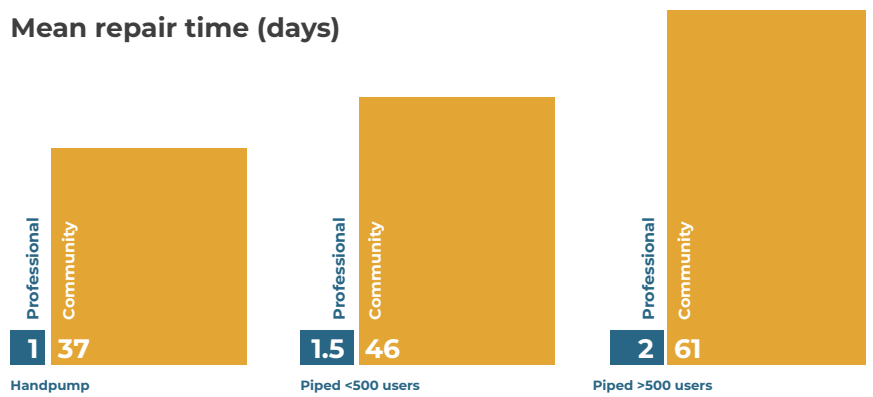


Fig. 3: Comparative repair time for breakdown Source: Foster 2019

### How

Sustainable funding can break a cycle of wasted investments in building water infrastructure that fails, then is abandoned, and may be later rebuilt or replaced incurring unnecessary costs.

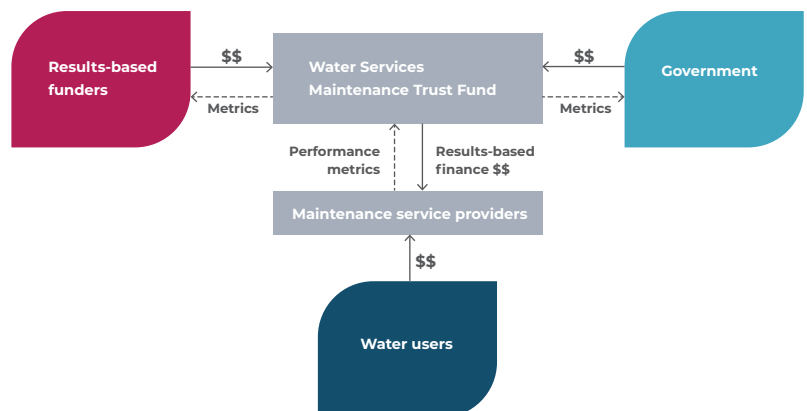


Fig. 4: Relationship among various stakeholders in rural water supply services

# Proof of efficacy of Result Based Funding

Sustainable funding can break a cycle of wasted investments in building water infrastructure that fails, then is abandoned, and may be later rebuilt or replaced incurring unnecessary costs.

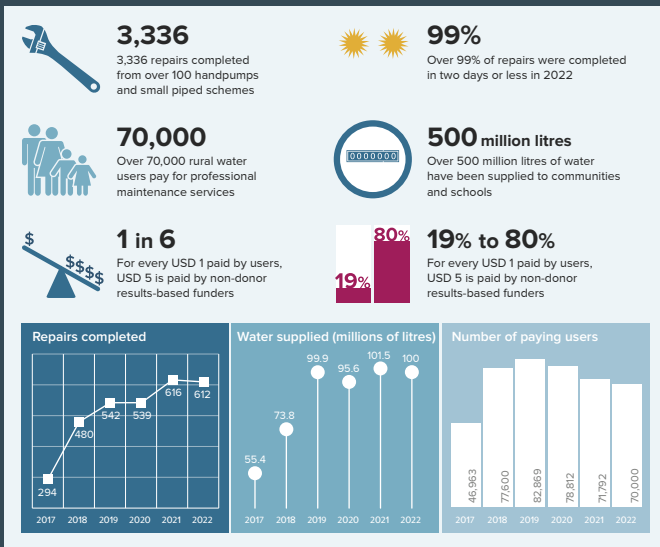


Fig. 5: Historical metrics from Kitui and Kwale Counties

## Our People

### Trustee



**Prof Albert Mumma**  
University of Nairobi



**Prof Robert Hope**  
University of Oxford



**Joy Busolo**  
World Bank Group



**Mike Thomas**  
Rural Focus Ltd

### Staff



**Eunice Owino**  
Partnership Manager  
eunice.owino@wsmtf.org



**Josphat Mukindia**  
Program Manager  
josphat.mukindia@wsmtf.org

## Strategic Goals

- 01** 320,000 people accessing reliable and potable water services by 2024
- 02** Strengthen data collection and verification
- 03** Support counties to design results-based contracts
- 04** Raise USD 1Million by end of 2024

## Contacts

### Water Services Maintenance Trust Fund (WSMTF)

- Westside Towers Third Floor, Off Lower Kabete Road, Westlands, Nairobi
- +254 113156269
- info@wsmtf.org
- https://www.kituiwaterfund.org

## Our Partners

