



WSMTF

WATER SERVICES
MAINTENANCE TRUST FUND

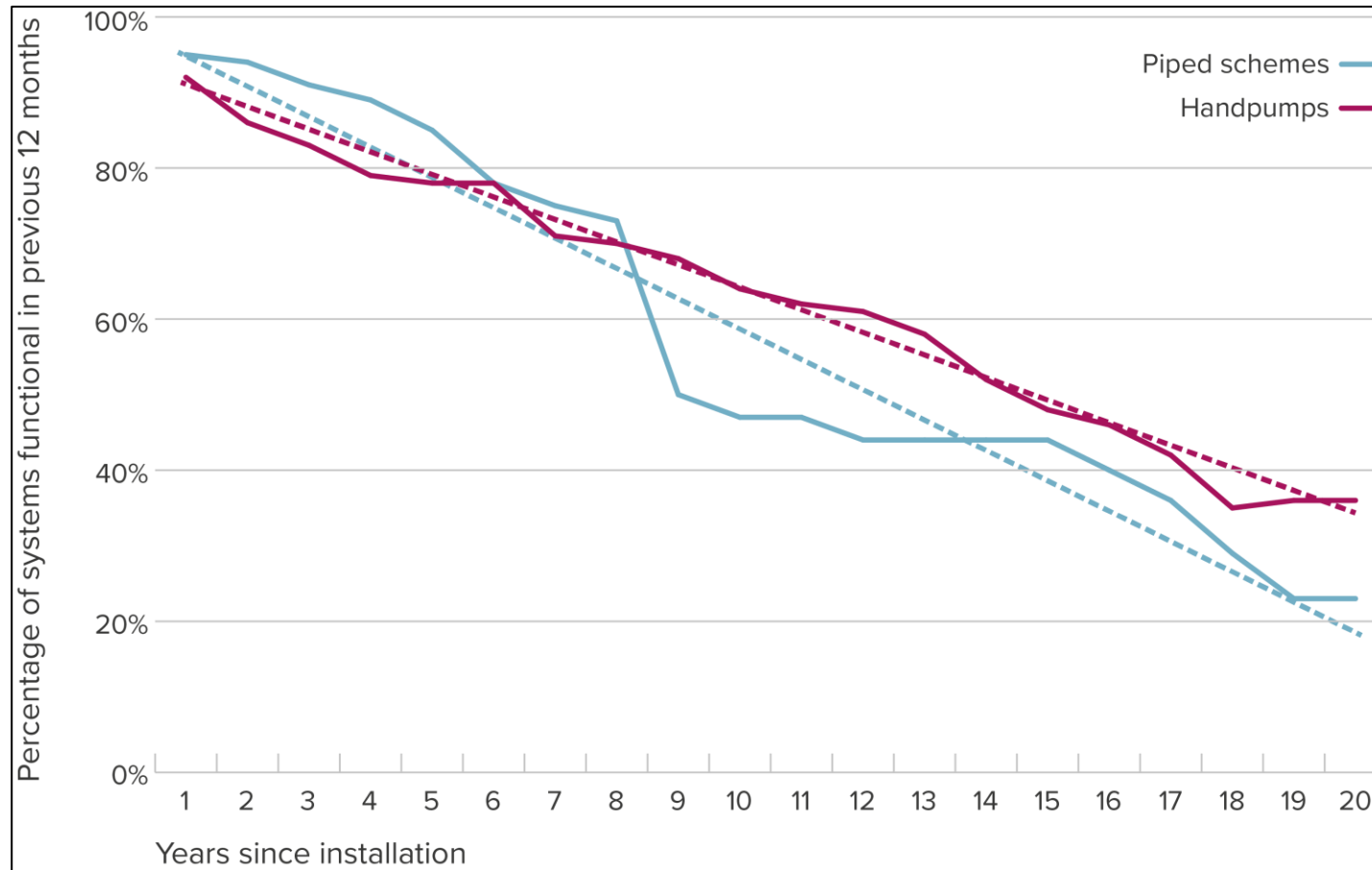
How can corporate funding incentivize daily delivery of drinking water services in rural Africa?

Webinar – 8th December, 2022

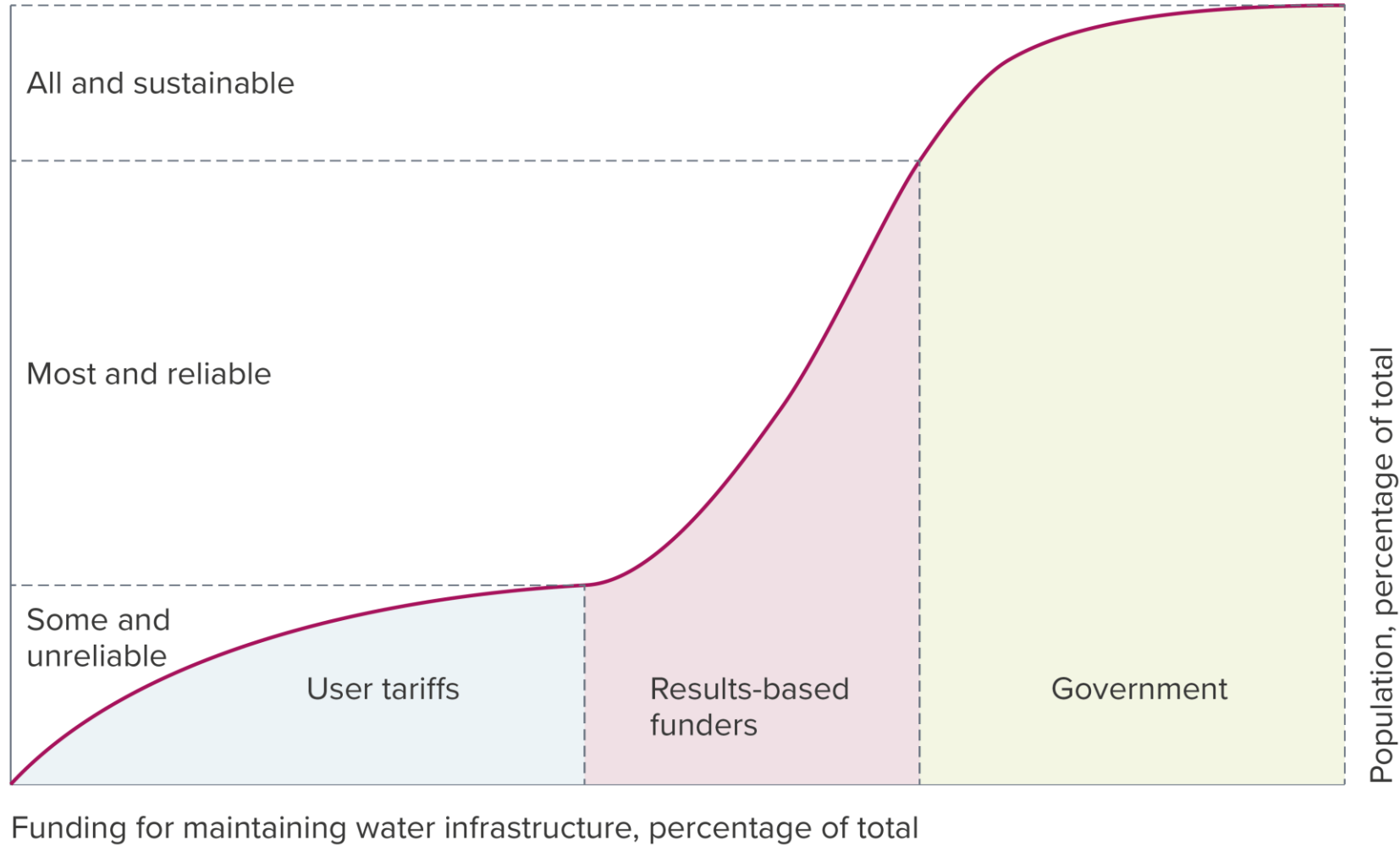
Agenda

- Welcome
- Water Services Maintenance Trust Fund
 - Panel 1 – Trustees and FundiFix
 - Panel 2 – Results-based funders
- Q&A – please post questions in 'chat box'
- Close

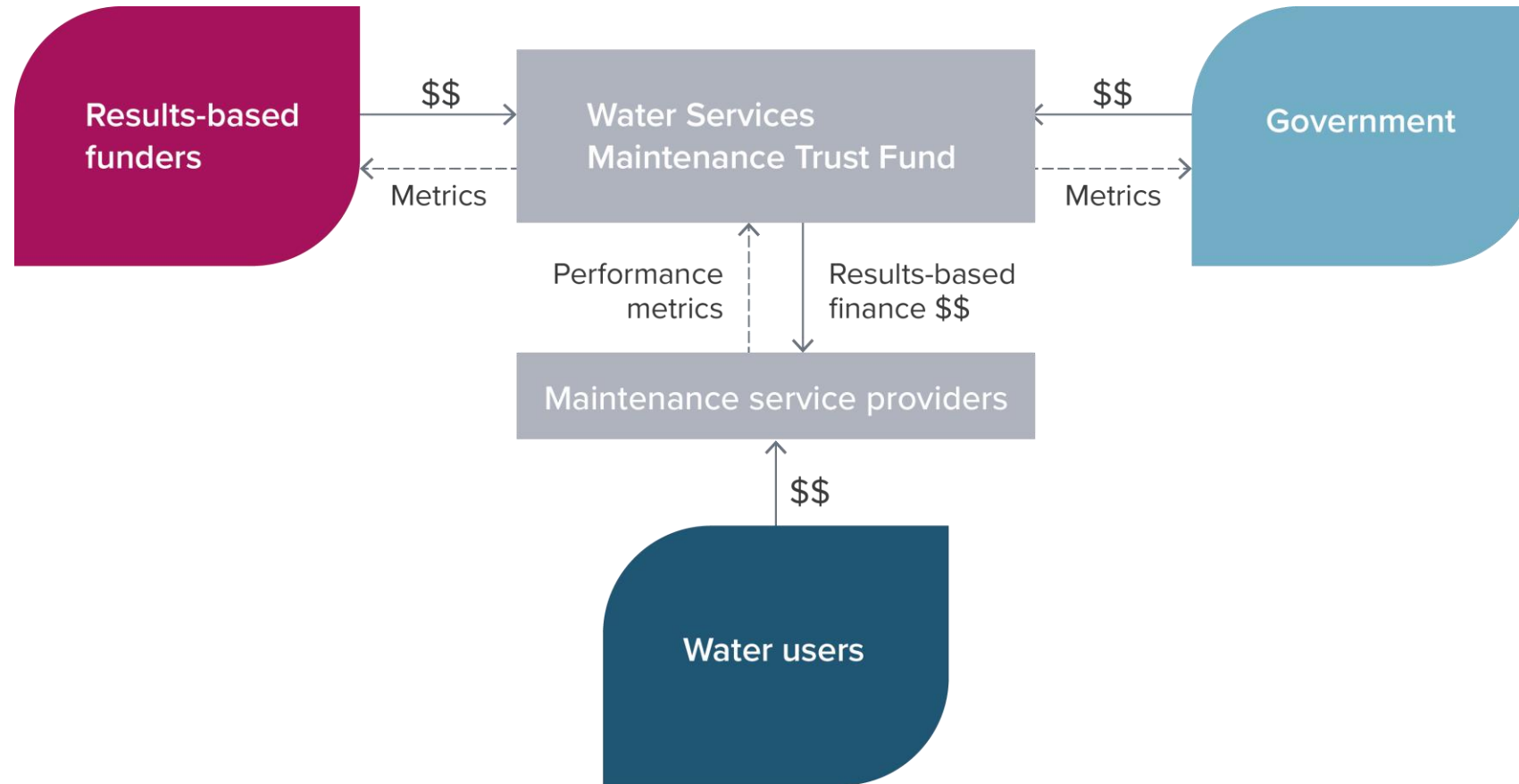
Why does the WSMTF exist?



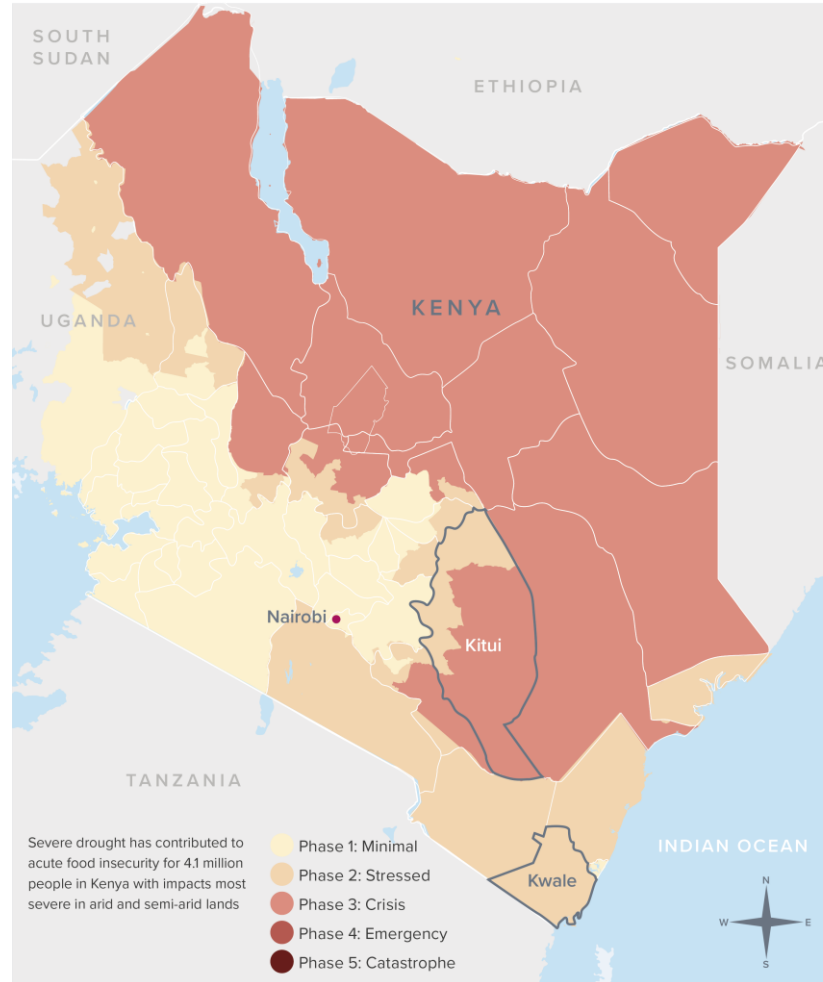
Source: Tim Foster



How does it work?



Where



Impact metrics



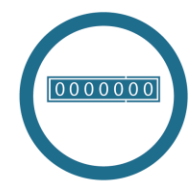
2,724
2,724 repairs completed from over 100 handpumps and small piped schemes



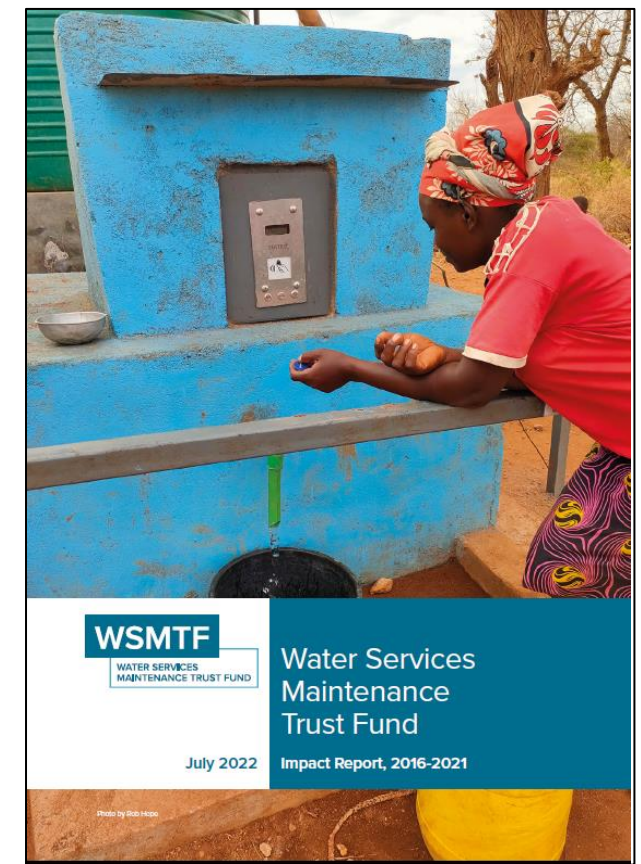
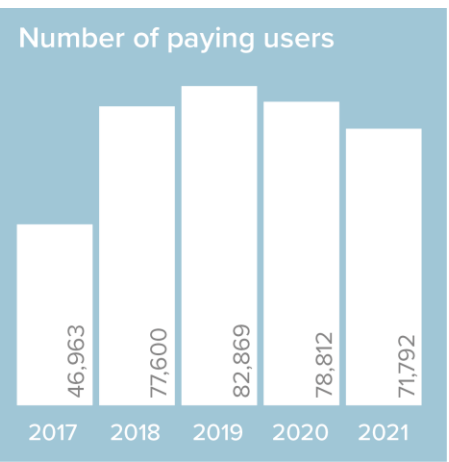
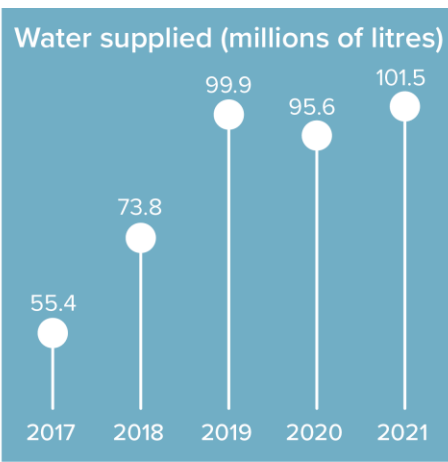
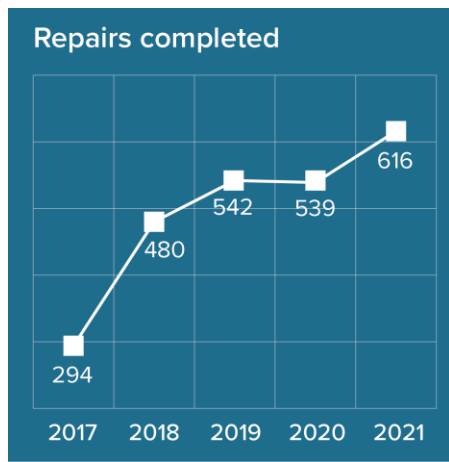
98%
Over 98% of repairs were completed in three days in 2021



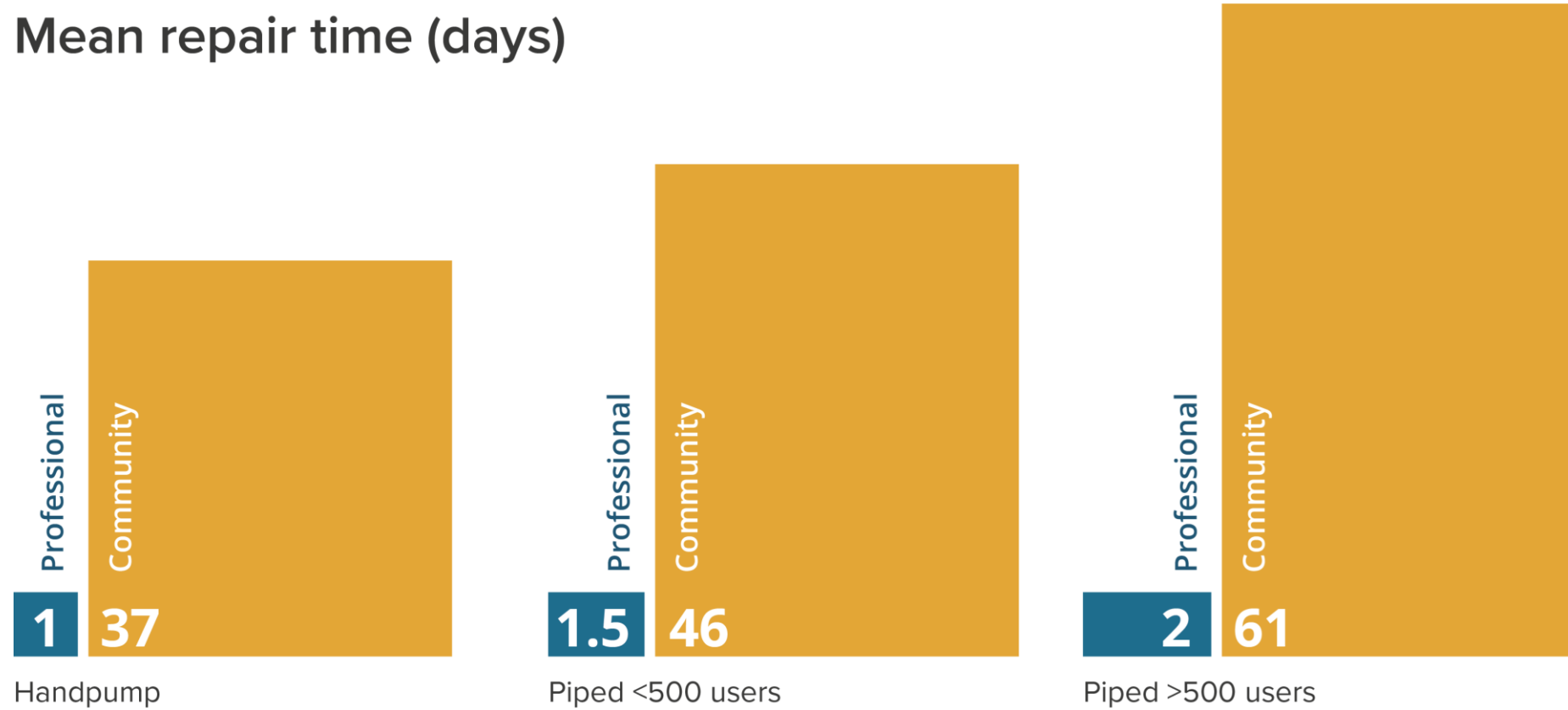
70,000
Over 70,000 rural water users pay for professional maintenance services

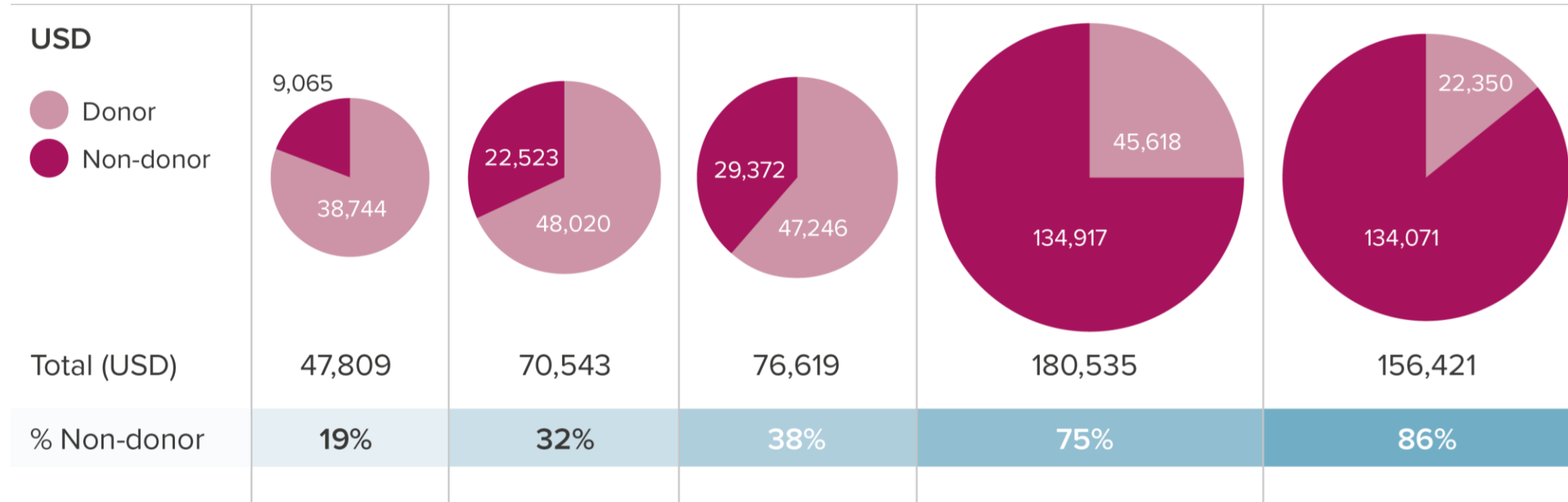


400 million litres
Over 400 million litres of water have been supplied to communities and schools



Mean repair time (days)

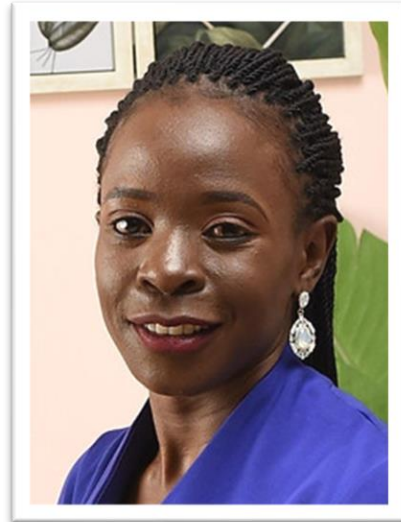




Panel 1



Prof Albert Mumma
University of Nairobi



Joy Busolo
World Bank Group



Eng. Mike Thomas
Rural Focus Ltd

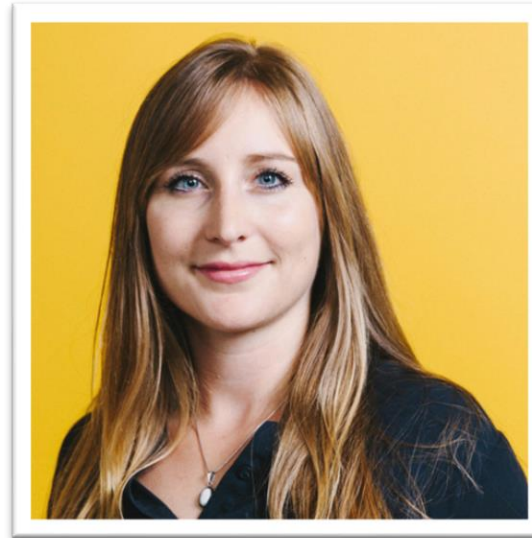


Cliff Nyaga
Fundifix

Panel 2



Simon Wall
GM External Affairs
Base Titanium Ltd



Iris Braun
Co-Founder/Chief Officer International
share



Amanda Robertson
Senior WASH Advisor
USAID

WSMTF

WATER SERVICES
MAINTENANCE TRUST FUND

WSMTF

WATER SERVICES
MAINTENANCE TRUST FUND

HOME

WHY

WHAT

HOW

TRUSTEES

PARTNERS

RESOURCES

SUSTAINABLE FUNDING FOR RELIABLE WATER SERVICES IN RURAL KENYA



kituiwaterfund.org

REACH

Improving water
security for the poor



USAID
FROM THE AMERICAN PEOPLE

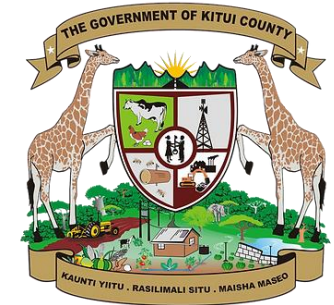
WSMTF

WATER SERVICES
MAINTENANCE TRUST FUND

Thanks to all our partners



share



USAID
FROM THE AMERICAN PEOPLE



REACH

Improving water security for the poor



kituiwaterfund.org

REACH

Improving water security for the poor

